



21660 COPLEY DRIVE

Diamond Bar, California

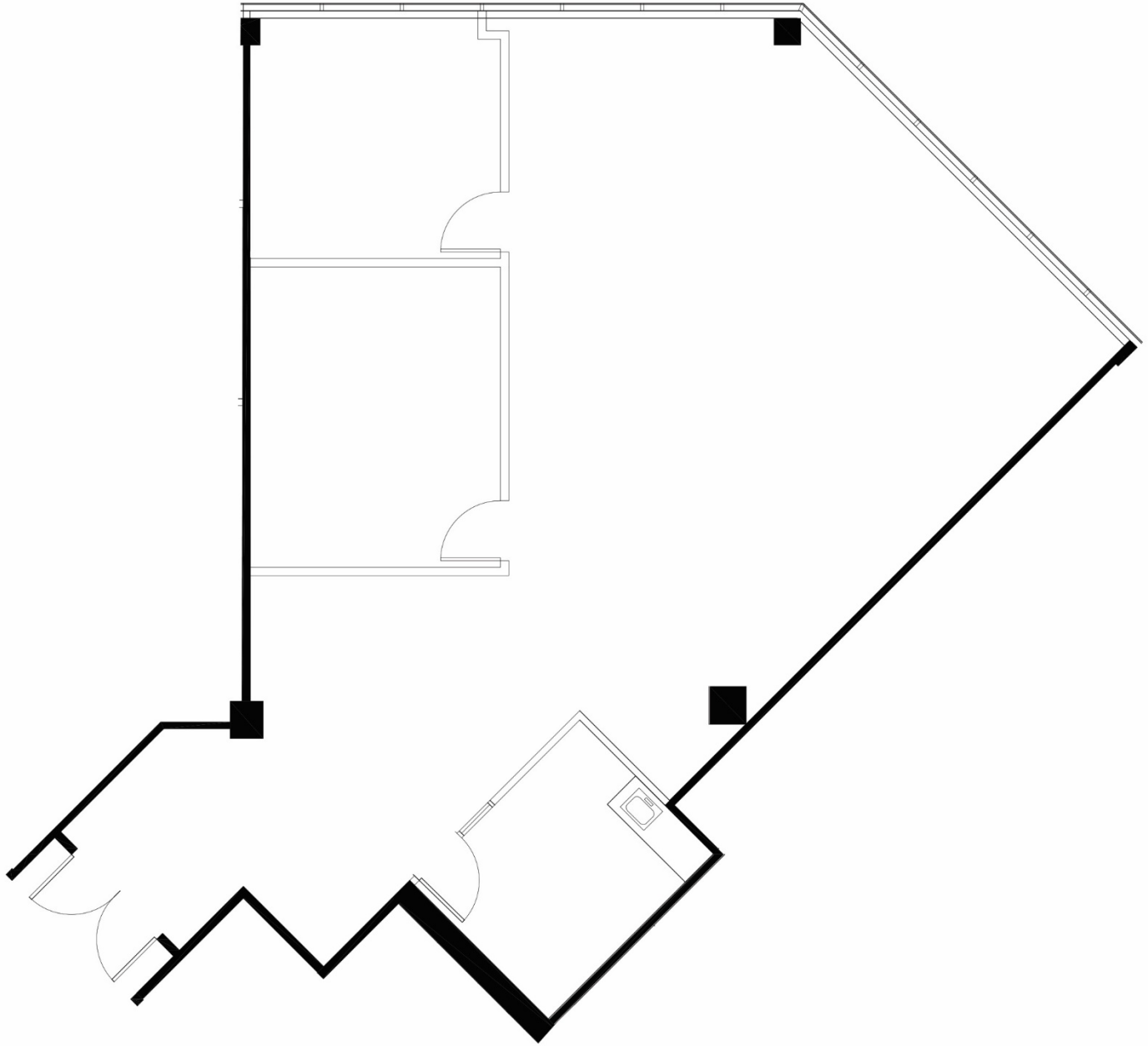
SUITE 190

1,871 SF



VIRTUAL TOUR

GATEWAY CORPORATE CENTER



For leasing information,
please contact:

SEAN KERN | 909.942.4691
Senior Director
sean.kern@cushwake.com
Lic. # 01377294

RYAN RUSSELL | 909.942.4697
Director
ryan.russell@cushwake.com
Lic. #01505274

