



# 21700 COPLEY DRIVE

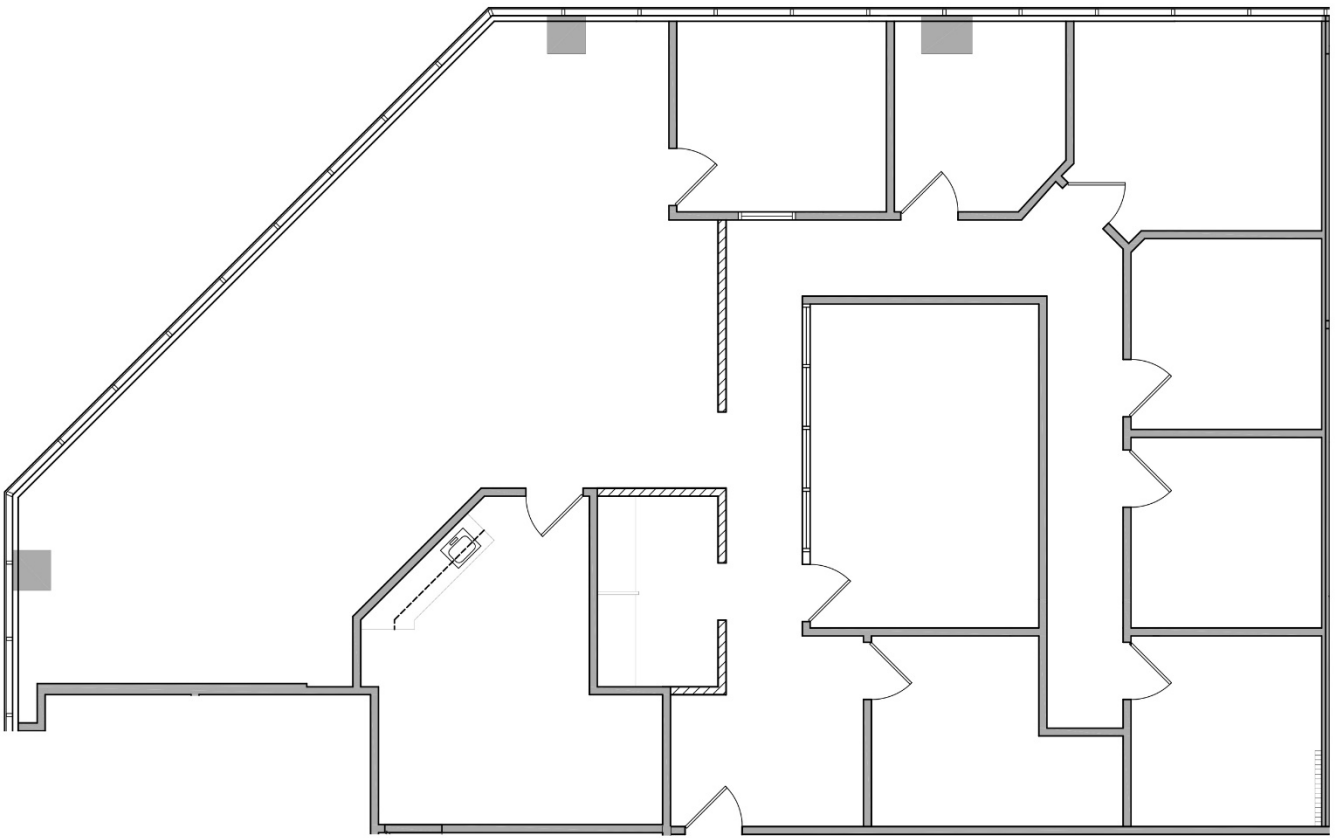
Diamond Bar, California

Suite 270

2,916 SF

Available 2/1/22

GATEWAY CORPORATE CENTER



For leasing information,  
please contact:  
**SEAN KERN** | 909.942.4691  
Senior Director  
sean.kern@cushwake.com  
Lic. # 01377294

**RYAN RUSSELL** | 909.942.4697  
Director  
ryan.russell@cushwake.com  
Lic. #01505274

