



21660 COPLEY DRIVE

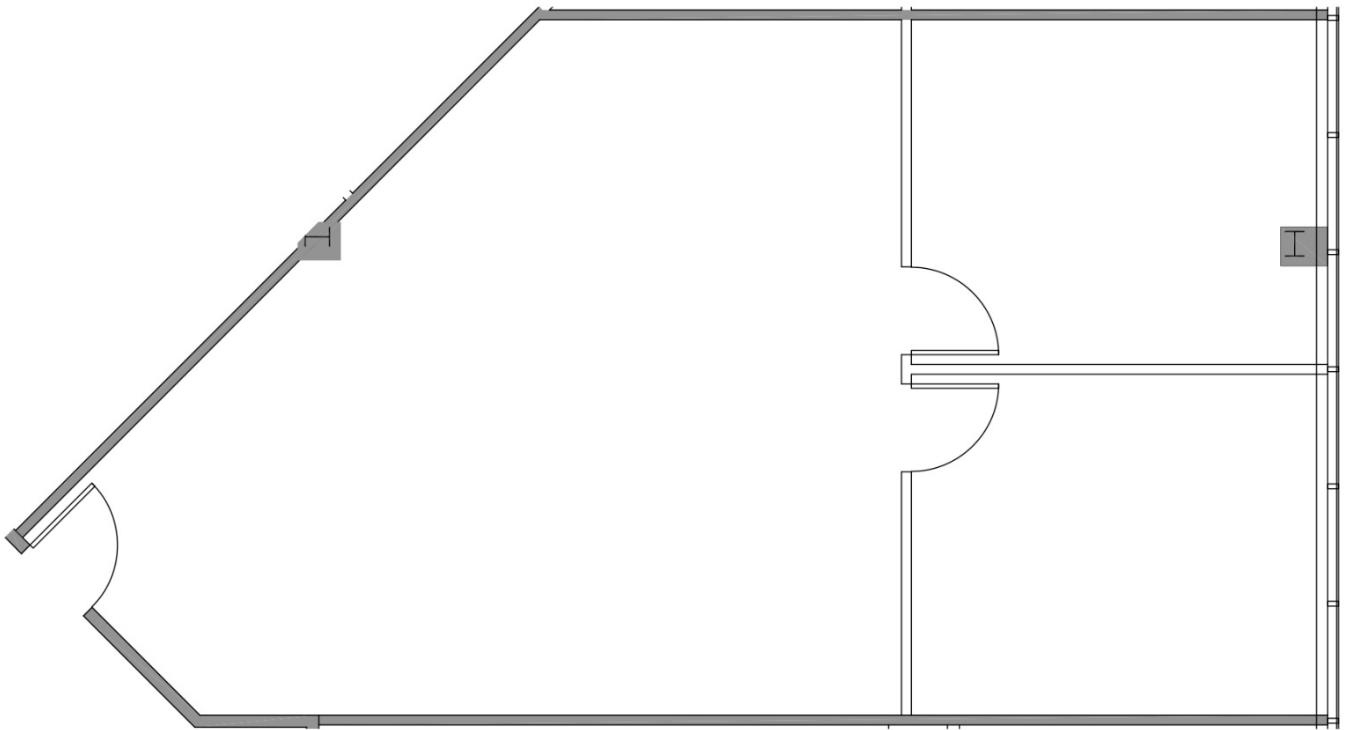
Diamond Bar, California

SUITE 215

1,048 SF



VIRTUAL TOUR



GATEWAY CORPORATE CENTER

For leasing information,
please contact:

SEAN KERN | 909.942.4691
Senior Director
sean.kern@cushwake.com
Lic. # 01377294

RYAN RUSSELL | 909.942.4697
Director
ryan.russell@cushwake.com
Lic. #01505274

