



# 21660 COPLEY DRIVE

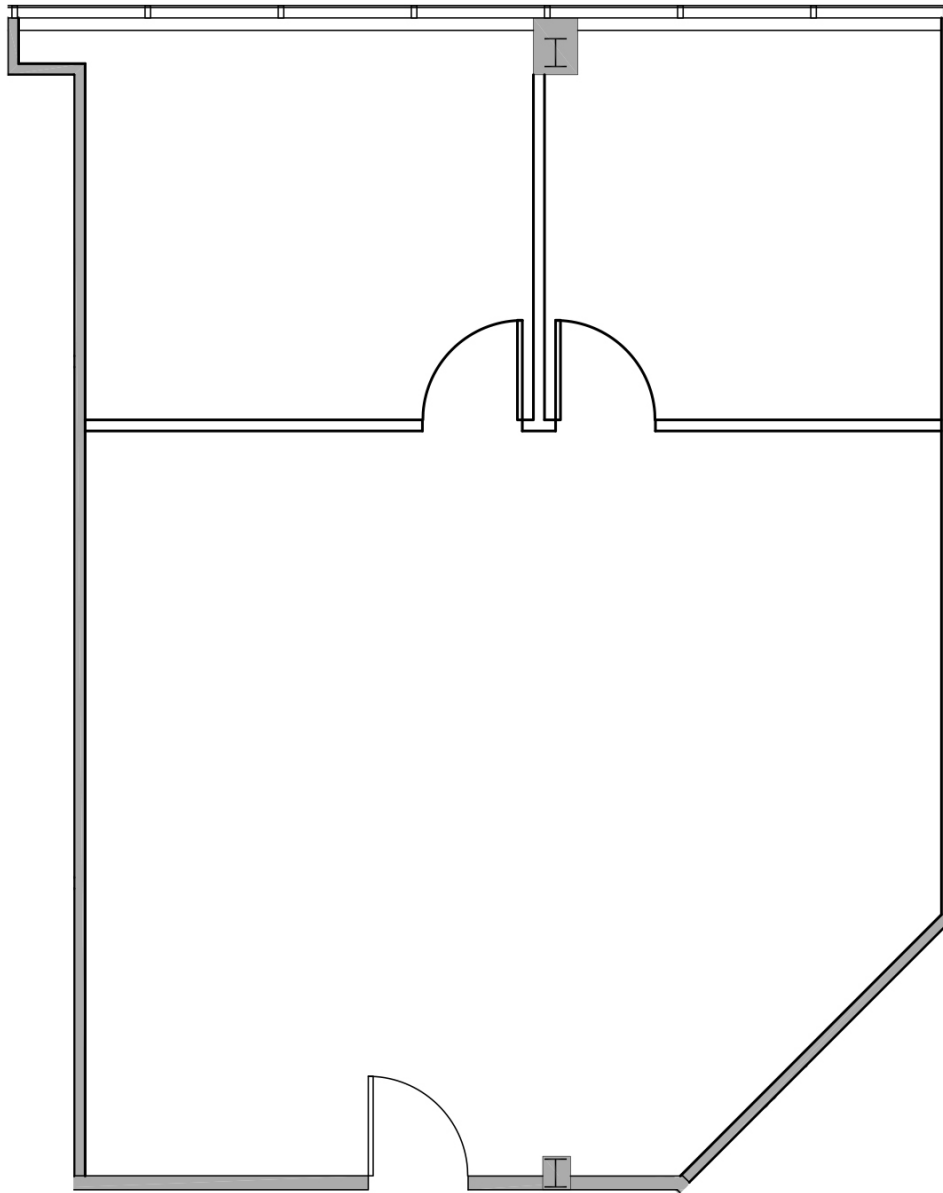
Diamond Bar, California

SUITE 350

1,030 SF



VIRTUAL TOUR



GATEWAY CORPORATE CENTER

For leasing information,  
please contact:

**SEAN KERN** | 909.942.4691  
Senior Director  
sean.kern@cushwake.com  
Lic. # 01377294

**RYAN RUSSELL** | 909.942.4697  
Director  
ryan.russell@cushwake.com  
Lic. #01505274

