



21700 E. COPLEY DRIVE

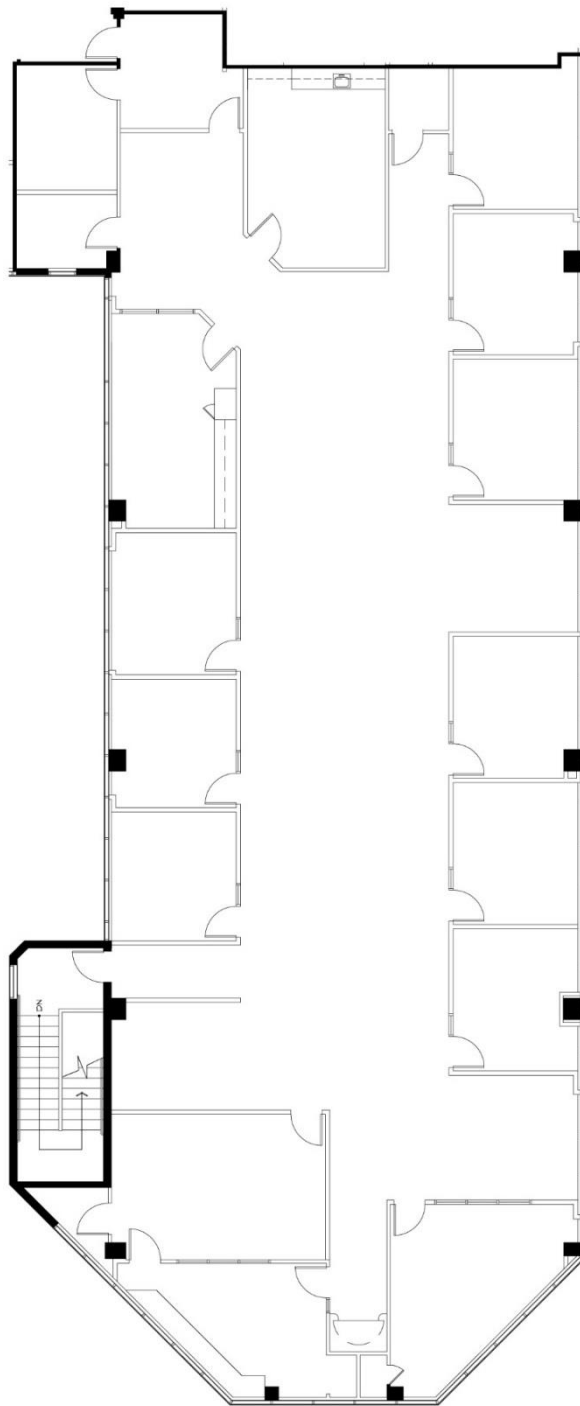
Diamond Bar, California

SUITE 320

7,022

AVAILABLE 9/1/19

GATEWAY CORPORATE CENTER



For leasing information,
please contact:

SEAN KERN | 909.942.4691
Senior Director
sean.kern@cushwake.com
Lic. # 01377294

RYAN RUSSELL | 909.942.4697
Director
ryan.russell@cushwake.com
Lic. #01505274

